

## Screwed Y-Type Strainer



- ASTM A351 CF8M 316 Stainless Steel Body and End Cap.
- PTFE Cap Seal. 316 Stainless Steel Filter Element.
- 1mm Perforated Screen x 2mm pitch with 80 mesh inner lining.
- 800 psi pressure rated.
- -25 / +200 deg C Temp rated.
- BSP and NPT screwed end connections.
- CE marked in accordance with PED 2014/68/EU (from 1.1/4").

**A good all round general purpose Y-Type Strainer.**

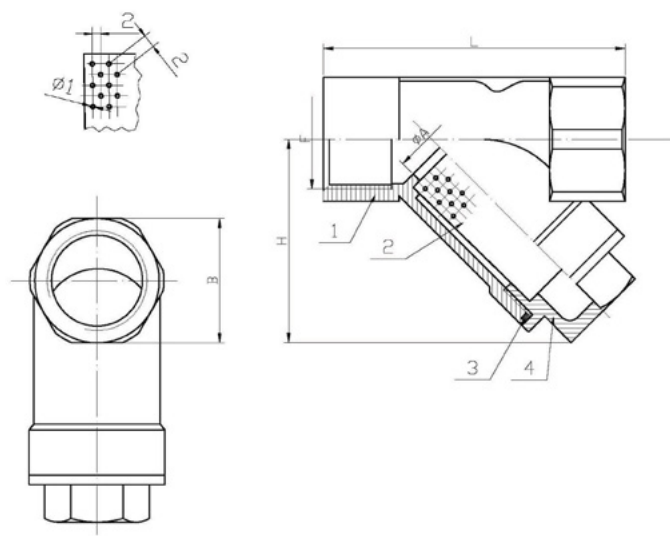
**High quality, heavy duty cast Stainless Steel Body.**

**This valve is pressure rated to 800 psi rather than the usual 600 psi available elsewhere.**

**NPT screwed ends are stocked in sizes 1/2" up to 2" only.**

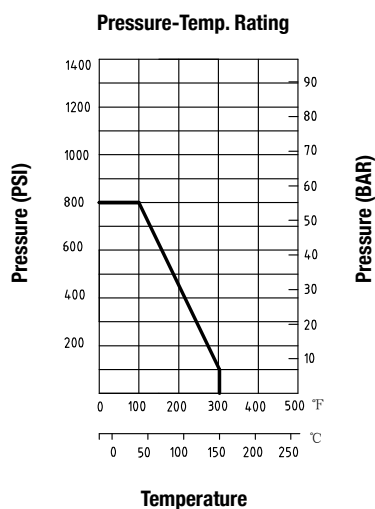
**Other sizes available on special order from factory.**

**Available size range: 1/4" - 4"**



Item	Part	Material	Qty.
1	Body	ASTM A351 CF8M	1
2	Screen	AISI 316	1
3	Gasket	PTFE	1
4	Bonnet	ASTM A351 CF8M	1

SIZE	A	B	H	L
1/4"	12	24	41.5	65
3/8"	12	24	41.5	65
1/2"	15	26	41.5	65
3/4"	20	33	52.5	80
1"	25	41	67.5	90
1-1/4"	32	49	71	105
1-1/2"	40	56	80.5	120
2"	50	69	95	140



## Screwed Y-Type Strainer

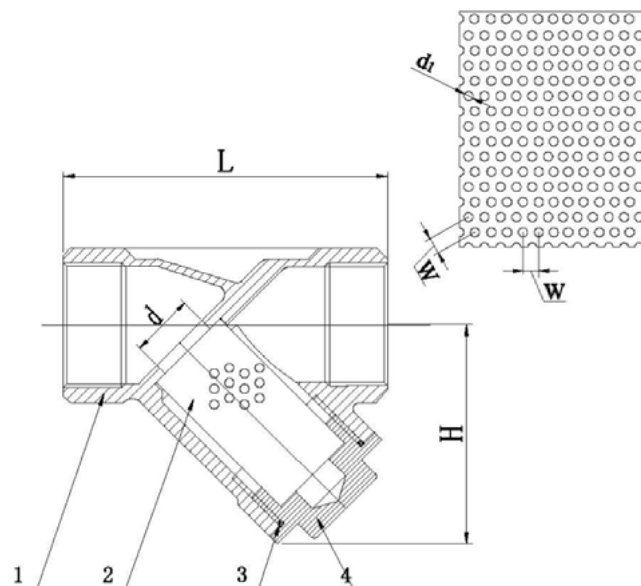


- ASTM A351 CF8M 316 Stainless Steel Body and End Cap.
- PTFE Cap Seal. 316 Stainless Steel Filter Element.
- 2.5" - 4" sizes have a 1mm Perforation x 2mm pitch.
- 800 psi pressure rated.
- -25 / +200 deg C Temp rated.
- BSP screwed end connections.
- CE marked in accordance with PED 2014/68/EU.

**A good all round general purpose Y-Type Strainer.**

**High quality, heavy duty cast Stainless Steel Body.**

**This valve is pressure rated to 800 psi rather than the usual 600 psi available elsewhere.**



Item	Part	Material	Qty.
1	Body	CF8M	1
2	Screen	SS316	1
3	Joint Gasket	PTFE	1
4	Bonnet	CF8M	1

SIZE	d	L	H	W	d <sub>1</sub>	KG
2-1/2"	61	167	117	2	1	2.99
3"	75	198	137	2	1	4.74
4"	94	238	163	2	1	7.88

**Pressure-Temp. Rating**

