

**Stainless Steel  
SMS Hygienic Unions**

# Introduction



**SMS unions (Swedish Manufacturing Standard - SMS 1145)** are a less popular Union choice in the UK market and usually show up on machinery purchased from the EU.

They are a hygienic fitting that features a captive seal design to provide a smooth, crevice-free internal bore.

The Union consists of a round slotted nut, weld liner and weld male with an L style seal available from stock in EPDM (other materials available on special order).

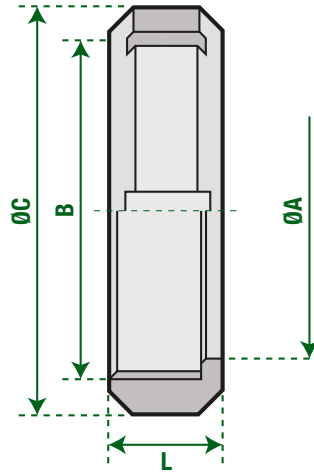
They are 10 Bar/g pressure rated.

The Nut is usually made from 304 Stainless Steel and the Male and Liner are 316L Stainless Steel.

The standard size range is 1" - 4" to suit Imperial Hygienic Tube.

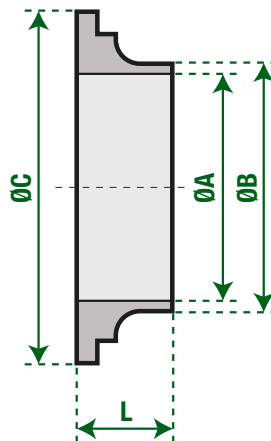
There are 2 types of 4" available, standard (referred to as 4 thread) and large (referred to as 6 thread)

## SMS-01 SMS Round Nut



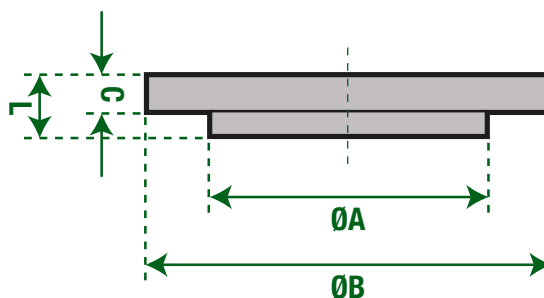
Size	DIM B	DIM C	DIM L
1"	25.4	51	20
1-1/2"	38.1	74	25
2"	51.8	84	26
2-1/2"	63.5	100	30
3"	76.1	114	32
4"	101.6	154	45
4"	101.6	138	31

## SMS-02 SMS Weld Liner



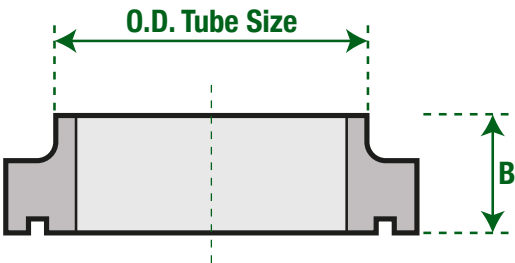
Size	DIM A	DIM B	DIM C	DIM L
1"	22.5	25.4	35.5	15.5
1-1/2"	35.5	38.1	55	16
2"	48.5	51.8	65	17
2-1/2"	60.5	63.5	80	17
3"	72.9	76.1	93	19
4"	98.5	101.6	127	19
4"	97.6	101.6	118	19

## SMS-03 SMS Machined Blank



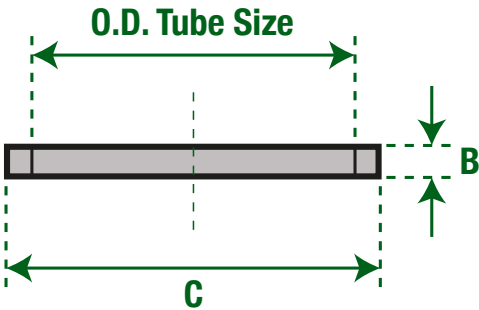
Size	DIM A	DIM B	DIM L
1"	32	35.5	7.5
1-1/2"	48	55	9
2"	60	65	10
2-1/2"	73.5	80	10
3"	86	93	11
4"	118	118	11

# SMS-04 SMS Weld Male



Size	DIM B	DIM B
1"	25.4	15
1-1/2"	38.1	23
2"	51.8	25
2-1/2"	63.5	30
3"	76.1	35
4"	101.6	29
4"	101.6	29

# SMS-05 SMS Joint Ring



Size	DIM B	DIM C
1"	5.5	32
1-1/2"	5.5	48
2"	5.5	61
2-1/2"	5.5	74
3"	5.5	86
4"	5.5	114