

ETG DWSG16

SIGHT GLASS PN16 FLANGE END

TC644 STAINLESS STEEL 304 / 1.4308-DIN-PN16
TC645 STAINLESS STEEL 316 / 1.4408-DIN-PN16

EDITION:A/0

MATERIALS LIST:

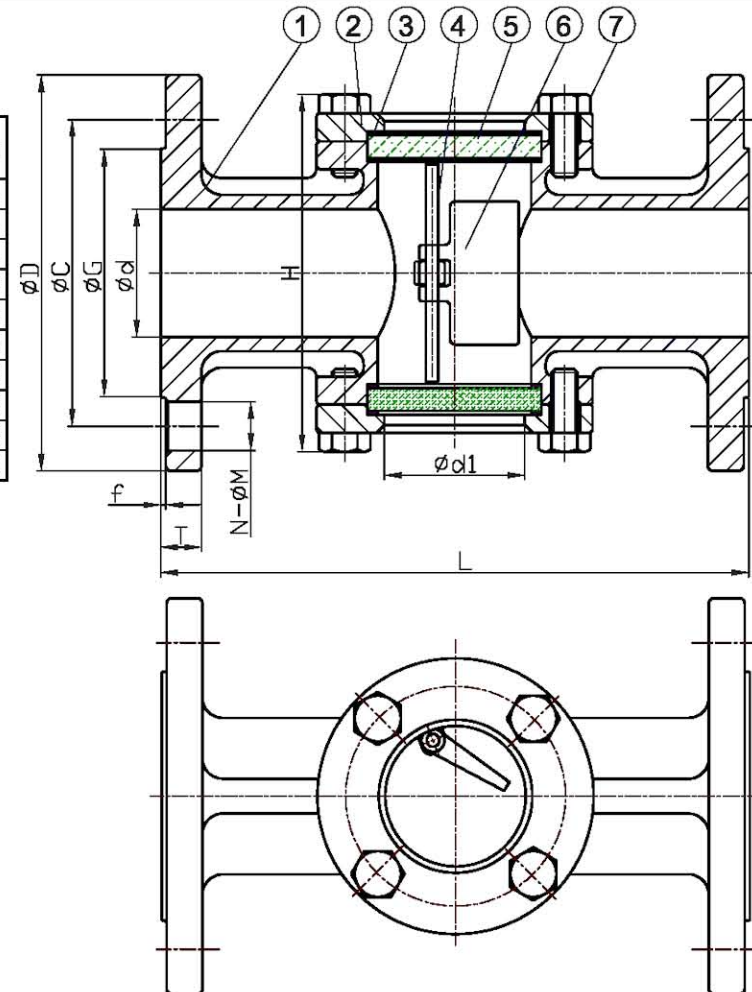
NO.	PART NAME	MATERIAL	
1	BODY	1.4308	1.4408
2	CAP	1.4308	1.4408
3	GASKET	PTFE	
4	STEM	SUS304	SUS316
5	GLASS PARCEL	GLASS	
6	INDICATOR	1.4308	1.4408
7	BOLT	SUS304	

DIMENSIONS:

SIZE	d	d1	L	H	D	C	G	f	T	N-ØM	
1/2"	15	15	35	130	115	95	65	45	2	14	4-Ø14
3/4"	20	20	35	150	115	105	75	58	2	16	4-Ø14
1"	25	25	35	160	115	115	85	68	2	16	4-Ø14
1 1/4"	32	32	55	180	143	140	100	78	2	16	4-Ø18
1 1/2"	40	40	55	200	143	150	110	88	3	16	4-Ø18
2"	50	50	55	230	143	165	125	102	3	18	4-Ø18
2 1/2"	65	65	85	290	185	185	145	122	3	18	4-Ø18
3"	80	80	85	310	196	200	160	138	3	20	8-Ø18
4"	100	100	110	350	228	220	180	158	3	20	8-Ø18
6"	150	150	160	480	310	285	240	212	3	22	8-Ø22

FEATURES:

- FACE TO FACE DIMENSIONS: DIN 3202-F1
- END FLANGE DIMENSIONS: PN16 DIN2633
- DESIGN: ANSI B16.34
- TEST: API 598
- INVESTMENT CASTING BODY



G.C. Supplies UK Limited

