

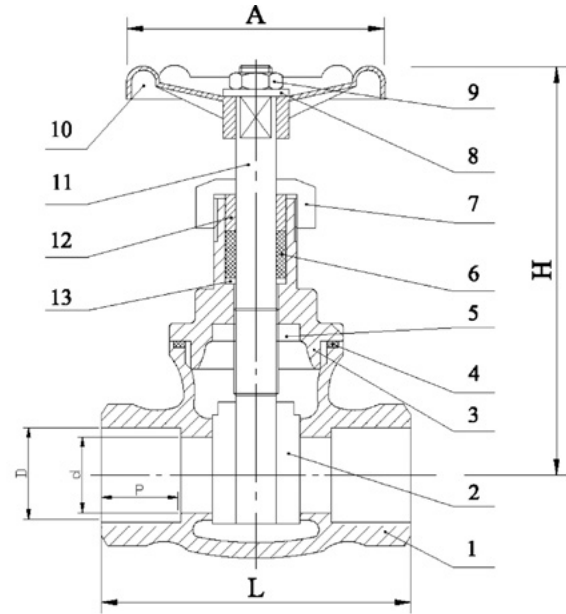
Socket Weld Gate Valve



- ASTM A351 CF8M 316 Stainless Steel Body, Bonnet and Wedge.
- 316 Stainless Steel Stem and Trim. Ductile Iron painted Handwheel.
- PTFE Gland Packing and Bonnet Seal.
- Screwed Bonnet. Non-Rising Stem. Solid Wedge.
- 600 psi/g pressure rated.
- -20 / +180 deg C Temp rated.
- Socket Weld NB end connections.
- CE marked (sizes 1.1/4" upward) in accordance with the PED 2014/68/EU

A good all round, robust general purpose Gate Valve. This valve offers a much more economical solution to the heavy pattern Forged Class 800# versions more commonly found in the UK market.

Available size range: 1/2" - 2"



| Item | Part | Material | Qty. |
|------|----------------|-----------|------|
| 1 | Body | CF8M | 1 |
| 2 | Disc | CF8M | 1 |
| 3 | Bonnet | CF8M | 1 |
| 4 | Gasket | PTFE | 1 |
| 5 | Snap Washer | SS316 | 1 |
| 6 | Packing | PTFE | 1 |
| 7 | Packing Nut | SS316 | 1 |
| 8 | Washer | SS304 | 1 |
| 9 | Hand Wheel Nut | SS304 | 1 |
| 10 | Hand Wheel | CAST IRON | 1 |
| 11 | Stem | SS316 | 1 |
| 12 | Gland | SS304 | 1 |
| 13 | Snap Washer | SS304 | 1 |

| SIZE | d | L | H | D | P | A | Kgs |
|--------|----|----|-----|------|----|----|------|
| 1/2" | 15 | 53 | 98 | 21.7 | 10 | 65 | 0.4 |
| 3/4" | 20 | 57 | 104 | 27.3 | 13 | 77 | 0.52 |
| 1" | 25 | 64 | 115 | 34.1 | 13 | 77 | 0.69 |
| 1-1/4" | 32 | 73 | 125 | 42.8 | 13 | 97 | 1.07 |
| 1-1/2" | 40 | 76 | 137 | 48.7 | 13 | 97 | 1.36 |
| 2" | 50 | 88 | 160 | 61.1 | 16 | 97 | 2.08 |

Pressure-Temp. Rating

