

## Wafer Pattern Spring Check Valve



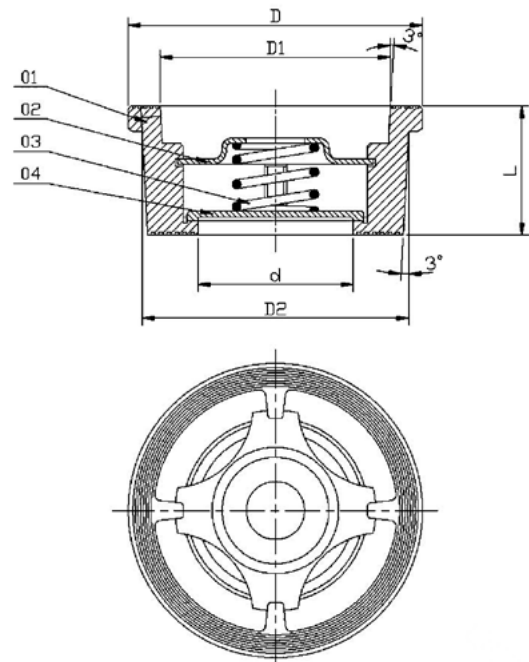
- ASTM A351 CF8M 316 Stainless Steel construction, 316 Trim, Spring, Screws and Insert.
- Metal – Metal Seat.
- 1/2"- 4" 40 bar pressure rated. 5"- 8" 25 bar pressure rated.
- -20 / + 200 deg C Temp rated.
- To fit between BS4504 DIN PN10/16/25/40 and ANSI 150.
- Face to Face dimensions conform to DIN 3202 K4.
- CE marked in accordance with PED 2014/68/EU (from 1.1/4").

The valves are designed to fit between flanges within the PCD of the flange bolts. This valve requires flange gaskets to be used. Because of the Metal – Metal seating, this valve can be used for elevated temperatures. Can be used in any orientation within the pipework. Low spring cracking pressures.

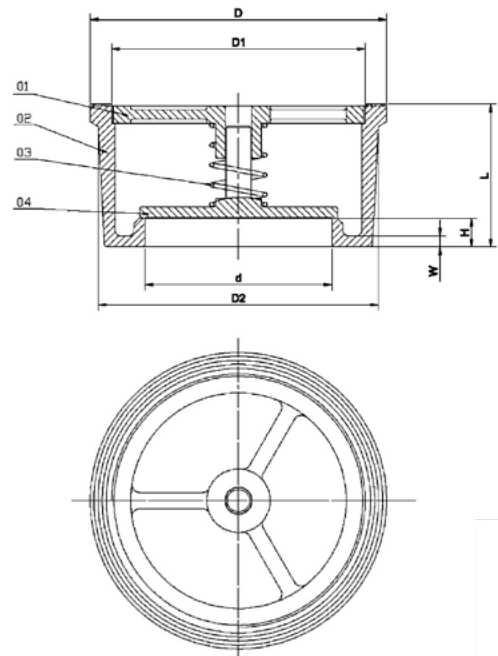
**Available size range: 1/2" - 8"**

SIZE	d	D	D1	D2	L	H	W
1/2"	15	39	28.3	34	16		
3/4"	20	46	35.7	41	19		
1"	25	54	40	49	22		
1-1/4"	32	70	52.4	62	28		
1-1/2"	40	81	61	71	32		
2"	48	94	75.4	85	40		
2-1/2"	62	113	90	102	46		
3"	75	132	109	123	50		
4"	95	150	125.3	140	60		
5"	118	187	160	177	90	18	6.8
6"	140	217	187	205	106	23	7.2
8"	185	274	240	261	140	32	8

**1/2" - 4"**

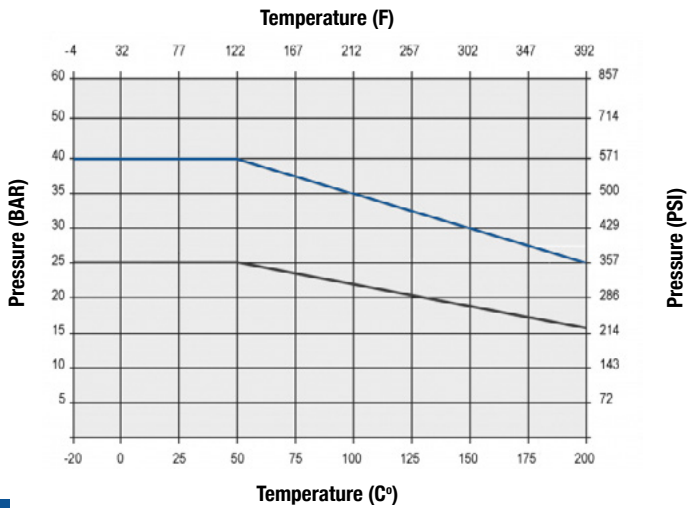


**5" - 8"**



Item	Part	Material	Qty.
1	Body	CF8M	1
2	Spring Cover	SS316	1
3	Spring	SS316	1
4	Disc	CF8M	1

### Pressure-Temp. Rating



1/2" - 4"

5" - 8"

SIZE	Vertical Upward Flow (mbar)	Vertical Downward Flow (mbar)	Horizontal Flow (mbar)
1/2"	25	21	23
3/4"	25	21	23
1"	25	21	23
1-1/4"	27	21	24
1-1/2"	29	21	25
2"	29	21	25
2-1/2"	31	21	26
3"	32	21	26
4"	33	21	27
5"	34	17	22
6"	36	18	23
8"	36	18	27

Please note that no alternative spring ranges are available for this model of Check Valve.

Coefficient KV	KV Factor
1/2"	3,7
3/4"	5,5
1"	8,5
1-1/4"	20
1-1/2"	27
2"	38
2-1/2"	60
3"	82
4"	120
5"	200
6"	240
8"	380

