



**Stainless Steel  
DIN Hygienic Unions**

# Introduction



**DIN unions (German institute for standardisation)** are a less popular Union choice in the UK market and usually show up on machinery purchased from Germany or the EU.

They are manufactured in accordance with DIN 11851 (EN10357)

The Union consists of a round slotted nut, weld liner, weld male and a D style seal available from stock in Nitrile, EPDM, Silicone and PTFE.

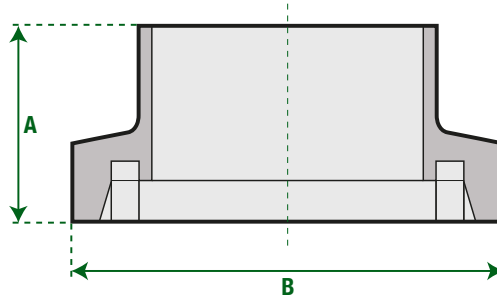
They are 10 Bar/g pressure rated.

The Nut is usually made from 304 Stainless Steel and the Male and Liner are 316L Stainless Steel.

The standard size range is 1" - 4" to suit Imperial Hygienic Tube. Sizes NW10 up to NW150 Metric Sizes are also available from stock.

# DIN-01

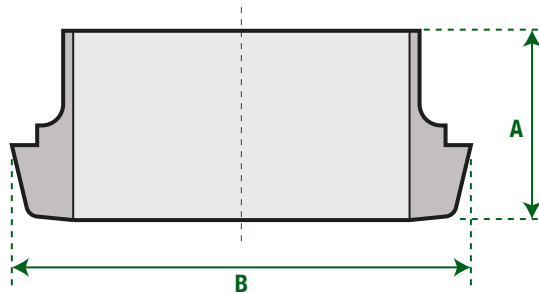
DIN Weld Male



Size	DIM A	DIM B
1"	29	Rd 52x1/6"
1-1/4"	33	Rd 58x1/6"
1-1/2"	35	Rd 65x1/6"
2"	40	Rd 78x1/6"
2-1/2"	40	Rd 95x1/6"
3"	40	Rd 110x1/6"
4"	54	Rd 130x1/6"

# DIN-02

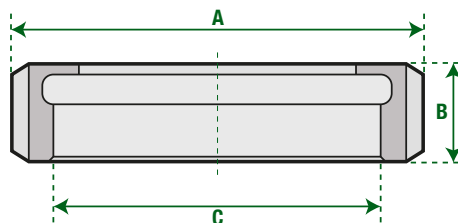
DIN Weld Liner



Size	DIM A	DIM B
1"	22	44
1-1/4"	25	50
1-1/2"	26	56
2"	28	68.5
2-1/2"	32	86
3"	37	100
4"	44	121

# DIN-03

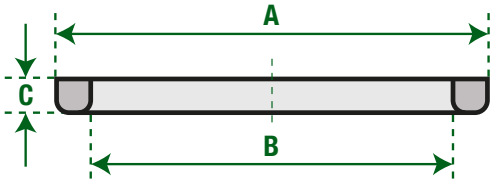
DIN Round Nut



Size	DIM A	DIM B	DIM C
1"	63	21	Rd 52x1/6"
1-1/4"	70	21	Rd 58x1/6"
1-1/2"	78	21	Rd 65x1/6"
2"	92	22	Rd 78x1/6"
2-1/2"	112	25	Rd 95x1/6"
3"	127	29	Rd 110x1/4"
4"	148	31	Rd 130x1/4"

# DIN-04

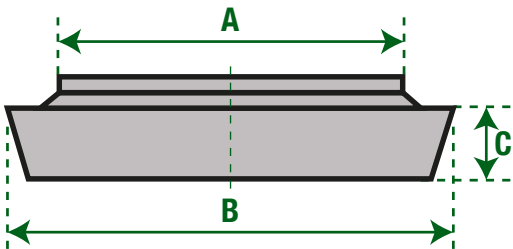
DIN Joint Ring



Size	DIM A	DIM B	DIM C
1"	40	30	5
1-1/4"	46	36	5
1-1/2"	52	42	5
2"	64	54	5
2-1/2"	81	71	5
3"	95	85	5
4"	114	104	6

# DIN-05

DIN Machined Blank



Size	DIM A	DIM B	DIM C
1"	35	44	13
1-1/4"	41	50	13
1-1/2"	48	56	13
2"	61	68.5	14
2-1/2"	79	68	16
3"	93	100	16
4"	114	121	20